

HARDIK®



VYOMH

VYOMH

Welcome to the

WORLD OF

Designer Drains



ABOUT US

We at **VYOMH** are aiming to become India's largest manufacturing brand of bathroom accessories. All of our products are manufactured in a state-of-the-art facility, fully equipped with the largest international technology and modern, eco-friendly manufacturing practices.

We at VYOMH use 304 & Fine Grade of stainless steel which is anti corrosive and rust resistance. It has a minimum of 18% chromium and 8% nickel, combined with a maximum of 0.08% carbon. It is defined as a Chromium-Nickel austenitic alloy. It is rust proof.

We are supported by a strong network of trusted dealers across the country.

Even though, a comparatively new player in the market, VYOMH still represents excellence with value and stands at par with the most renowned brands. The Company has made many products and grown considerably in the market as a result of its solid work ethic, creative intellect, and support from its consumers. The ideals of the Company are distinguished by extraordinary design, elevated quality, 100% indigenous manufacturing, and a persistent desire for customer satisfaction.

We have exclusive range of designs where you can choose as per your choice from our different Product Line.



INDEX

Titan Ramp Drain Series	01 - 08
Nova Ramp Drain Series	09
Star Terrace Drain Series	10
Grace Mini Ramp Series	11 - 12
Luxuria Floor Drain System Series	13 - 15
Finesse Manhole Cover Series	16
Galaxy Slim Floor Drain Series	17
Galaxy Slimline shower Drain Series	18 - 23
Infinity Drain Series	24 - 30
Color Shower Drain Series	31 - 34
Colored Floor Drain Series	35 - 38
Round Floor Drain Series	39 - 44
Square Floor Drain Series	45 - 50
Matrix Floor Drain Series	51 - 52
Bathroom Accessories	53 - 56
Customisation Options	57
Commercial Drain Series	58

TITAN

RAMP DRAIN SERIES

The Titan Series Heavy - duty Drain, Crafted from AISI 304 - grade Stainless Steel, Offers Seamless Flow, Durability & Easy Customization in Various Sizes for Versatile Installation in Various Settings.

CP Rideau Centre

simons



TITAN RAMP DRAIN SERIES

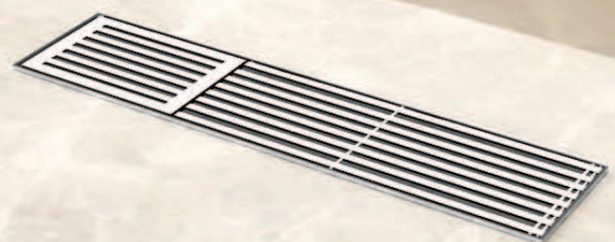
The Titan Series Heavy - duty Drain, Crafted from AISI 304 - grade Stainless Steel, Offers Seamless Flow, Durability & Easy Customization in Various Sizes for Versatile Installation in Various Settings.

* DESIGNS AND CONCEPTS ARE PATENTED

TITAN

RAMP DRAIN SERIES

The Titan Series Heavy - duty Drain, Crafted from AISI 304 - grade Stainless Steel, Offers Seamless Flow, Durability & Easy Customization in Various Sizes for Versatile Installation in Various Settings.





TITAN

RAMP DRAIN SERIES

The Titan Series Heavy - duty Drain, Crafted from AISI 304 - grade Stainless Steel, Offers Seamless Flow, Durability & Easy Customization in Various Sizes for Versatile Installation in Various Settings.

BARNES & NOBLE

TITAN RAMP DRAIN SERIES

The Titan Series Heavy - duty Drain, Crafted from AISI 304 - grade Stainless Steel, Offers Seamless Flow, Durability & Easy Customization in Various Sizes for Versatile Installation in Various Settings.



TITAN RAMP DRAIN SERIES

The Titan Series Heavy - duty Drain, Crafted from AISI 304 - grade Stainless Steel, Offers Seamless Flow, Durability & Easy Customization in Various Sizes for Versatile Installation in Various Settings.

TITAN

RAMP DRAIN SERIES

The Titan Series Heavy - duty Drain, Crafted from AISI 304 - grade Stainless Steel, Offers Seamless Flow, Durability & Easy Customization in Various Sizes for Versatile Installation in Various Settings.



TITAN RAMP DRAIN

The **Titan Series** heavy-duty drain system is a standout in drainage technology, crafted from top-quality AISI 304-grade stainless steel, prized for its strength and corrosion resistance. Only a handful of global companies possess the expertise to manufacture this exceptional drain. Its unique design allows for customization up to an impressive 12 feet, ensuring a seamless, jointless structure that can withstand heavy loads with ease, from trucks and aircraft to regular vehicles. Versatile and adaptable, it fits seamlessly into various environments like malls, entrances, parking lots, bathrooms, and poolside areas.

The Titan Series is not just its size or material but its remarkable load-bearing capabilities and effortless installation. Its robust stainless steel finish not only ensures longevity but also adds a touch of sophistication to any space. The system's design and concepts are safeguarded by patents, ensuring its authenticity and exclusivity in the market.

Our product boasts effortless installation in any location without the need for a locking system, eliminating theft concerns.

PACKAGING



SPECIFICATIONS

MATERIAL	AISI 304 GRADE STAINLESS STEEL
LENGTH	CUSTOMISABLE UPTO ANY LENGTH
APPLICATIONS	INTERIOR & EXTERIOR
FEATURES	ANTI-CORROSION, MAINTAINENCE FREE & EASY TO CLEAN



RAMP DRAIN

MODEL CODE	SIZE (L X W)		FINISH	M.R.P. (₹) <small>(INCLUSIVE OF ALL TAXES)</small>
	(MM)	(INCHES)		
TR01	1220X178	48X7	MATT	1,25,000/-
TR02	2440X178	96X7	MATT	2,50,000/-
TR03	3660X178	144X7	MATT	3,75,000/-

NOVA

FLOOR DRAIN SERIES

The NOVA Series Drain, Crafted from AISI 304 - grade Stainless Steel, offers maximum out flow, Durability & Easy Customization in various Sizes for Versatile Installation in to enhance the outlook of your lifestyle.



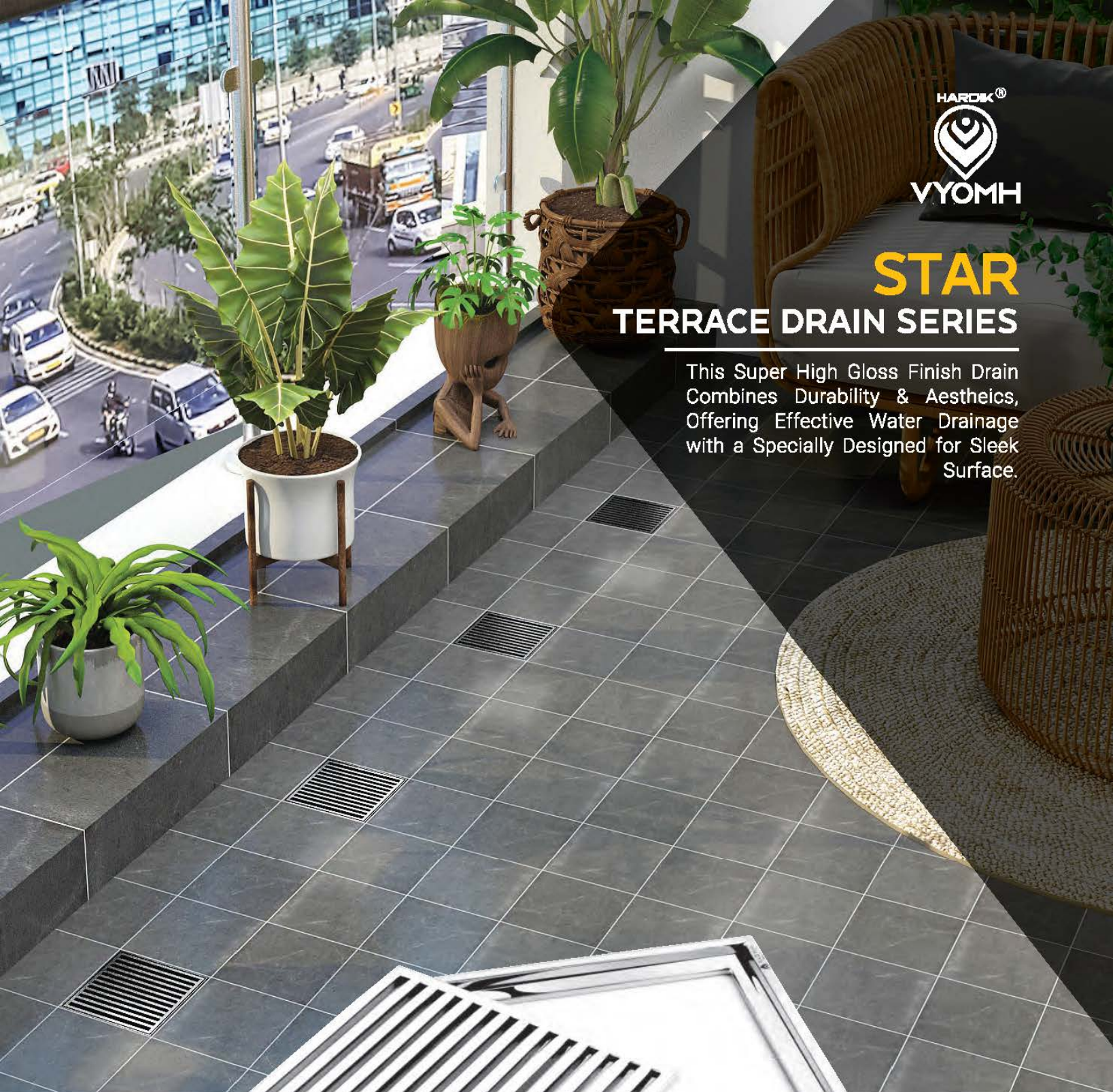
NOVA FLOOR DRAIN

MODEL CODE	SIZE (L X W)		FINISH	M.R.P. (₹)
	(MM)	(INCHES)		(INCLUSIVE OF ALL TAXES)
NV01	610X102	24X4	HIGH GLOSS	18,000/-
NV02	915X102	36X4	HIGH GLOSS	27,000/-
NV03	1220X102	48X4	HIGH GLOSS	36,000/-
NV04	2440X152	96X6	HIGH GLOSS	80,000/-

* DESIGN & CONCEPT ARE PATENTED

STAR TERRACE DRAIN SERIES

This Super High Gloss Finish Drain Combines Durability & Aesthetics, Offering Effective Water Drainage with a Specially Designed for Sleek Surface.



TERRACE DRAIN

MODEL CODE	SIZE (L X W)		FINISH	M.R.P. (₹) <small>(INCLUSIVE OF ALL TAXES)</small>
	(MM)	(INCHES)		
TD01	205X205	8X8	HIGH GLOSS	8,000/-
TD02	305X305	12X12	HIGH GLOSS	15,000/-



GRACE MINI RAMP SERIES

This Heavy-duty Drain, Built Robustly, Offers Superior Strength & Seamless Drainage. Its Durable Design Ensures reliability in demanding environments, perfect for Versatile Installation.



MINI RAMP

MODEL CODE	SIZE (L X W)		FINISH	M.R.P. (₹)
	(MM)	(INCHES)		(INCLUSIVE OF ALL TAXES)
MR01	305X305	12X12	GLOSS & MATT	20,000/-



MINI RAMP

MODEL CODE	SIZE (L X W)		FINISH	M.R.P. (₹)
	(MM)	(INCHES)		(INCLUSIVE OF ALL TAXES)
MR02	610X152	24X6	GLOSS & MATT	29,500/-

HARDIK®



VYOMH

LUXURIA

FLOOR DRAIN SERIES

These Discreet Outdoor Drains blend seamlessly into larger areas by allowing the placement of identical Stones, Providing Effective Drainage Without Disrupting the Surface.



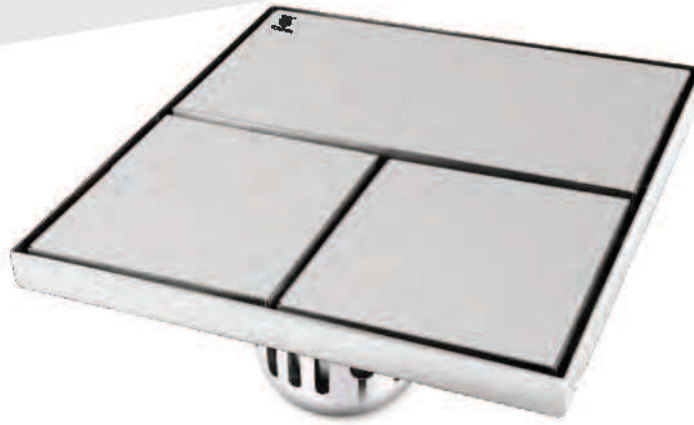
FLOOR DRAIN SYSTEM

MODEL CODE	SIZE (L X W)		FINISH	M.R.P. (₹)
	(MM)	(INCHES)		(INCLUSIVE OF ALL TAXES)
LV01	305X305	12X12	MATT	15,000/-



FLOOR DRAIN SYSTEM

MODEL CODE	SIZE (L X W)		FINISH	M.R.P. (₹)
	(MM)	(INCHES)		(INCLUSIVE OF ALL TAXES)
LV02	305X305	12X12	MATT	16,000/-



FLOOR DRAIN SYSTEM

MODEL CODE	SIZE (L X W)		FINISH	M.R.P. (₹) <small>(INCLUSIVE OF ALL TAXES)</small>
	(MM)	(INCHES)		
LV03	305X305	12X12	MATT	16,500/-



FLOOR DRAIN SYSTEM

MODEL CODE	SIZE (L X W)		FINISH	M.R.P. (₹) <small>(INCLUSIVE OF ALL TAXES)</small>
	(MM)	(INCHES)		
LV04	305X305	12X12	MATT	17,000/-



FLOOR DRAIN SYSTEM

MODEL CODE	SIZE (L X W)		FINISH	M.R.P. (₹) <small>(INCLUSIVE OF ALL TAXES)</small>
	(MM)	(INCHES)		
LV05	305X305	12X12	MATT	19,000/-

C9

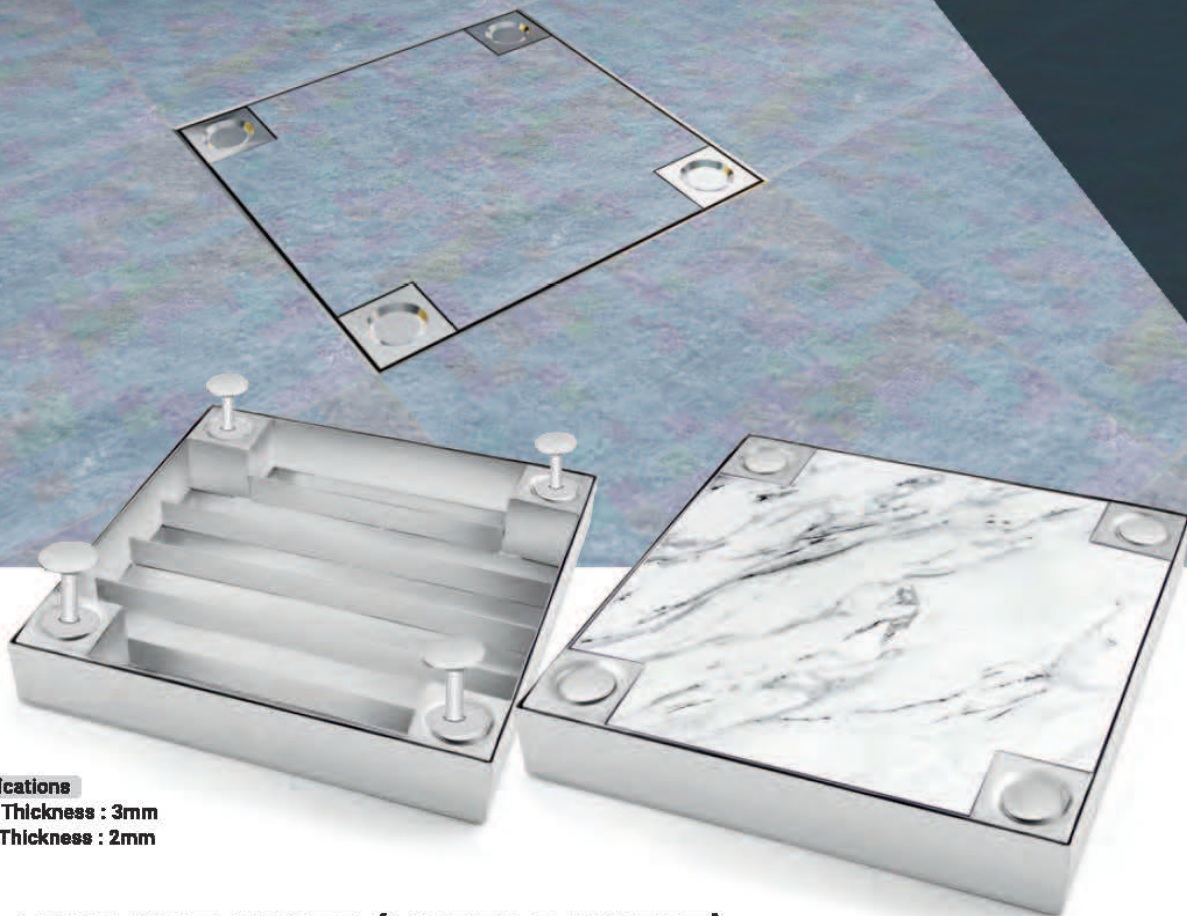
HARDIK®



VYOMH

FINESSE MANHOLE COVER SERIES

These manhole cover drains cleverly integrate by using matching marble, seamlessly blending into the surroundings.



Specifications

Frame Thickness : 3mm
Upper Thickness : 2mm

MANHOLE COVER (MARBLE INSERT)

MODEL CODE	SIZE (L X W)		WEIGHT (KG)	FINISH	M.R.P. (₹) <small>[INCLUSIVE OF ALL TAXES]</small>
	(MM)	(INCHES)			
VMH01	305X305	12X12	6KG	MATT	17,000/-
VMH02	455X455	18X18	10KG	MATT	29,500/-
VMH03	610X610	24X24	15KG	MATT	43,500/-

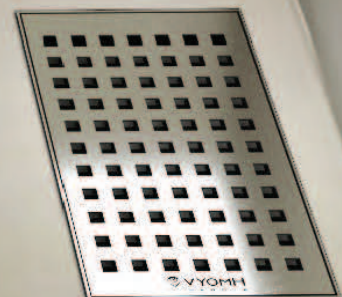
* CUSTOMIZED SIZES ARE ALSO AVAILABLE ON REQUEST
* DESIGN REGISTRATION PENDING



GALAXY

SLIM FLOOR DRAIN SERIES

These slim drains feature stunning, modern designs, offering both aesthetic appeal and efficient drainage in a sleek, space-saving form.



HARDIK®



VYOMH

GALAXY

SLIMLINE SHOWER DRAIN SERIES

These slim drains feature stunning, modern designs, offering both aesthetic appeal and efficient drainage in a sleek, space-saving form.



SUPER SLIM SHOWER DRAIN 3 INCHES (WIDE)



SHOWER DRAIN CHANNEL

MODEL CODE	SIZE (L X W)		FINISH	M.R.P. (₹) <small>(INCLUSIVE OF ALL TAXES)</small>
	(MM)	(INCHES)		
SS01	305X78	12X3	GLOSS/MATT	3,200/-
SS02	455X78	18X3	GLOSS/MATT	4,700/-
SS03	610X78	24X3	GLOSS/MATT	6,350/-
SS04	760X78	30X3	GLOSS/MATT	7,950/-
SS05	915X78	36X3	GLOSS/MATT	9,550/-
SS06	1065X78	42X3	GLOSS/MATT	11,000/-
SS07	1220X78	48X3	GLOSS/MATT	12,700/-
SS08	1525X78	60X3	GLOSS/MATT	15,900/-

SUPER SLIM GRANITE INSERT DRAIN 3 INCHES (WIDE)



GRANITE INSERT DRAIN CHANNEL

MODEL CODE	SIZE (L X W)		FINISH	M.R.P. (₹) <small>(INCLUSIVE OF ALL TAXES)</small>
	(MM)	(INCHES)		
SSG01	305X78	12X3	GLOSS/MATT	3,500/-
SSG02	455X78	18X3	GLOSS/MATT	5,200/-
SSG03	610X78	24X3	GLOSS/MATT	7,000/-
SSG04	760X78	30X3	GLOSS/MATT	8,850/-
SSG05	915X78	36X3	GLOSS/MATT	10,600/-
SSG06	1065X78	42X3	GLOSS/MATT	12,400/-
SSG07	1220X78	48X3	GLOSS/MATT	14,200/-
SSG08	1525X78	60X3	GLOSS/MATT	17,700/-

SLIMLINE SHOWER DRAIN



SHOWER DRAIN CHANNEL

MODEL CODE	SIZE (L X W)		FINISH	M.R.P. (₹)
	(MM)	(INCHES)		(INCLUSIVE OF ALL TAXES)
SL01	305X102	12X4	GLOSS/MATT	3,500/-
SL02	455X102	18X4	GLOSS/MATT	5,200/-
SL03	610X102	24X4	GLOSS/MATT	7,000/-
SL04	760X102	30X4	GLOSS/MATT	8,850/-
SL05	915X102	36X4	GLOSS/MATT	10,600/-
SL06	1065X102	42X4	GLOSS/MATT	12,400/-
SL07	1220X102	48X4	GLOSS/MATT	14,200/-
SL08	1525X102	60X4	GLOSS/MATT	17,700/-
SL09	455X152	18X6	GLOSS/MATT	12,000/-
SL10	610X152	24X6	GLOSS/MATT	16,000/-
SL11	1220X152	48X6	GLOSS/MATT	32,000/-

SLIMLINE GRANITE INSERT DRAIN



GRANITE INSERT DRAIN CHANNEL

MODEL CODE	SIZE (L X W)		FINISH	M.R.P. (₹)
	(MM)	(INCHES)		(INCLUSIVE OF ALL TAXES)
SLG01	305X102	12X4	GLOSS/MATT	3,900/-
SLG02	455X102	18X4	GLOSS/MATT	5,850/-
SLG03	610X102	24X4	GLOSS/MATT	7,800/-
SLG04	760X102	30X4	GLOSS/MATT	9,750/-
SLG05	915X102	36X4	GLOSS/MATT	11,700/-
SLG06	1065X102	42X4	GLOSS/MATT	13,600/-
SLG07	1220X102	48X4	GLOSS/MATT	15,600/-
SLG08	1525X102	60X4	GLOSS/MATT	19,500/-
SLG09	455X152	18X6	GLOSS/MATT	18,000/-
SLG10	610X152	24X6	GLOSS/MATT	17,000/-
SLG11	1220X152	48X6	GLOSS/MATT	35,000/-

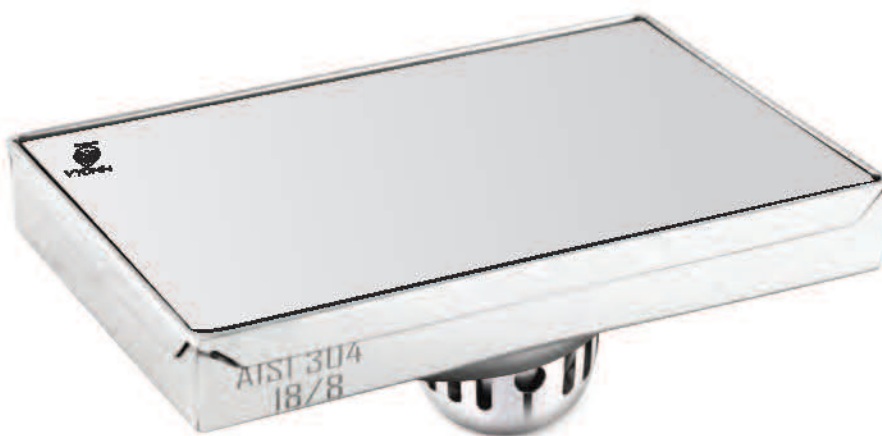
SLIMLINE RECTANGULAR SHOWER DRAIN



RECTANGULAR DRAIN

MODEL CODE	SIZE (L X W)		FINISH	M.R.P. (₹)
	(MM)	(INCHES)		(INCLUSIVE OF ALL TAXES)
SLR01	152X102	6X4	GLOSS/MATT	1,575/-
SLR02	205X102	8X4	GLOSS/MATT	2,050/-

SLIMLINE RECTANGULAR GRANITE INSERT DRAIN



RECTANGULAR GRANITE INSERT DRAIN

MODEL CODE	SIZE (L X W)		FINISH	M.R.P. (₹)
	(MM)	(INCHES)		(INCLUSIVE OF ALL TAXES)
SLRG01	152X102	6X4	GLOSS/MATT	1,975/-
SLRG02	205X102	8X4	GLOSS/MATT	2,450/-

**SLIMLINE SQUARE
 SHOWER DRAIN**



SQUARE DRAIN

MODEL CODE	SIZE (L X W)		FINISH	M.R.P. (₹) <small>(INCLUSIVE OF ALL TAXES)</small>
	(MM)	(INCHES)		
SLS01	127X127	5X5	GLOSS/MATT	2,800/-
SLS02	152X152	6X6	GLOSS/MATT	3,400/-

**SLIMLINE SQUARE
 GRANITE INSERT DRAIN**



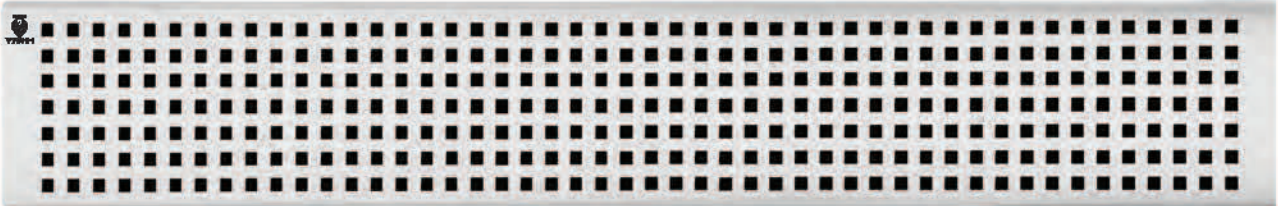
SQUARE GRANITE INSERT DRAIN

MODEL CODE	SIZE (L X W)		FINISH	M.R.P. (₹) <small>(INCLUSIVE OF ALL TAXES)</small>
	(MM)	(INCHES)		
SLSG01	127X127	5X5	GLOSS/MATT	3,400/-
SLSG02	152X152	6X6	GLOSS/MATT	3,900/-

OTHER GRATING DESIGNS AVAILABLE*

SLIMLINE SHOWER DRAINS

----- **FORCE** -----



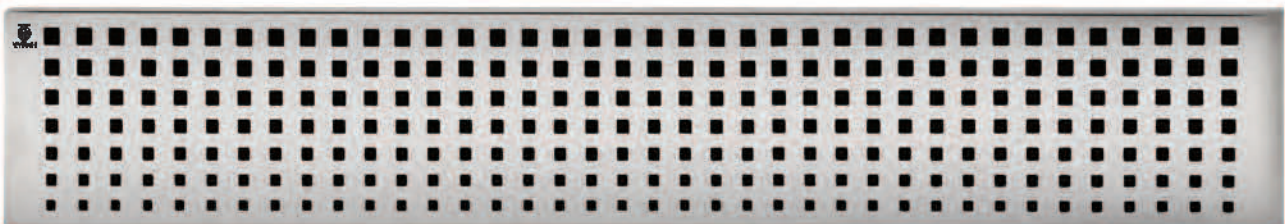
----- **HEXA** -----



----- **BRICKS** -----



----- **AMAZE** -----



PL. NOTE : ABOVE DESIGNS ARE AVAILABLE IN SLIM
LINE SHOWER DRAINS ONLY

* TERMS & CONDITIONS APPLY

INFINITY DRAIN SERIES

These heavy-duty shower drain channels ensure robustness while efficiently managing water flow, combining durability with classic design.

SHOWER DRAIN



SHOWER DRAIN CHANNEL

MODEL CODE	SIZE (L X W)		FINISH	M.R.P. (₹)
	(MM)	(INCHES)		(INCLUSIVE OF ALL TAXES)
SDW01	305X102	12X4	GLOSS/MATT	2,415/-
SDW02	455X102	18X4	GLOSS/MATT	3,485/-
SDW03	610X102	24X4	GLOSS/MATT	4,600/-
SDW04	760X102	30X4	GLOSS/MATT	5,795/-
SDW05	915X102	36X4	GLOSS/MATT	6,975/-
SDW06	1065X102	42X4	GLOSS/MATT	8,100/-
SDW07	1220X102	48X4	GLOSS/MATT	9,225/-
SDW08	1525X102	60X4	GLOSS/MATT	11,600/-

GRANITE INSERT DRAIN



GRANITE INSERT DRAIN CHANNEL

MODEL CODE	SIZE (L X W)		FINISH	M.R.P. (₹)
	(MM)	(INCHES)		(INCLUSIVE OF ALL TAXES)
LGD01	305X102	12X4	GLOSS/MATT	2,530/-
LGD02	455X102	18X4	GLOSS/MATT	3,825/-
LGD03	610X102	24X4	GLOSS/MATT	4,950/-
LGD04	760X102	30X4	GLOSS/MATT	6,240/-
LGD05	915X102	36X4	GLOSS/MATT	7,370/-
LGD06	1065X102	42X4	GLOSS/MATT	8,800/-
LGD07	1220X102	48X4	GLOSS/MATT	9,990/-
LGD08	1525X102	60X4	GLOSS/MATT	12,500/-

*ABOVE DRAINS ARE AVAILABLE IN 10 MM TILES ALSO

WIDE SHOWER DRAIN



SHOWER DRAIN CHANNEL

MODEL CODE	SIZE (L X W)		FINISH	M.R.P. (₹) <small>(INCLUSIVE OF ALL TAXES)</small>
	(MM)	(INCHES)		
MSD01	455X152	18X6	GLOSS/MATT	8,665/-
MSD02	610X152	24X6	GLOSS/MATT	11,365/-
MSD03	1220X152	48X6	GLOSS/MATT	22,700/-

WIDE GRANITE INSERT DRAIN



GRANITE INSERT DRAIN CHANNEL

MODEL CODE	SIZE (L X W)		FINISH	M.R.P. (₹) <small>(INCLUSIVE OF ALL TAXES)</small>
	(MM)	(INCHES)		
MGD01	455X152	18X6	GLOSS/MATT	11,025/-
MGD02	610X152	24X6	GLOSS/MATT	14,850/-
MGD03	1220X152	48X6	GLOSS/MATT	29,700/-

**COMPASS
 SHOWER DRAIN**



SQUARE DRAIN

MODEL CODE	SIZE (L X W)		FINISH	M.R.P. (₹) <small>(INCLUSIVE OF ALL TAXES)</small>
	(MM)	(INCHES)		
CSD01	152X152	6X6	GLOSS/MATT	6,600/-



RETRO SHOWER DRAIN



SQUARE DRAIN

MODEL CODE	SIZE (L X W)		FINISH	M.R.P. (₹) <small>(INCLUSIVE OF ALL TAXES)</small>
	(MM)	(INCHES)		
RFD01	127X127	5X5	GLOSS/MATT	1,390/-
RFD02	152X152	6X6	GLOSS/MATT	1,475/-

SQUARE GRANITE INSERT DRAIN



SQUARE GRANITE INSERT DRAIN

MODEL CODE	SIZE (L X W)		FINISH	M.R.P. (₹) <small>(INCLUSIVE OF ALL TAXES)</small>
	(MM)	(INCHES)		
SGD01	127X127	5X5	GLOSS/MATT	2,530/-
SGD02	152X152	6X6	GLOSS/MATT	3,035/-
SGD03	205X205	8X8	GLOSS/MATT	4,050/-
SGD04	305X305	12X12	GLOSS/MATT	6,075/-
SGDSPL	102X102	4X4	GLOSS/MATT	2,050/-

*ABOVE DRAINS ARE AVAILABLE IN 10 MM TILES ALSO

VENUS GRANITE INSERT DRAIN



SQUARE GRANITE INSERT DRAIN

MODEL CODE	SIZE (L X W)		FINISH	M.R.P. (₹) <small>(INCLUSIVE OF ALL TAXES)</small>
	(MM)	(INCHES)		
VTD01	127X127	5X5	GLOSS/MATT	1,550/-
VTD02	152X152	6X6	GLOSS/MATT	1,650/-

*ABOVE DRAINS ARE AVAILABLE IN 10 MM TILES ALSO

AQUA GRANITE INSERT DRAIN



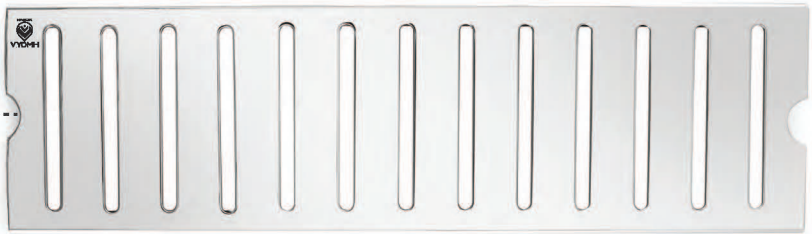
SQUARE GRANITE INSERT DRAIN

MODEL CODE	SIZE (L X W)		FINISH	M.R.P. (₹) <small>(INCLUSIVE OF ALL TAXES)</small>
	(MM)	(INCHES)		
ATD01	127X127	5X5	GLOSS/MATT	1,550/-
ATD02	152X152	6X6	GLOSS/MATT	1,650/-

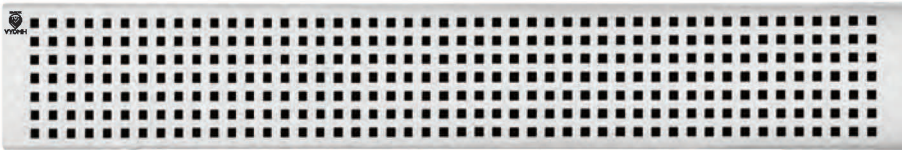
OTHER GRATING DESIGNS AVAILABLE*



FLUTE



PIANO



FORCE

PL. NOTE : ABOVE DESIGNS ARE AVAILABLE IN INFINITY DRAINS SERIES ONLY

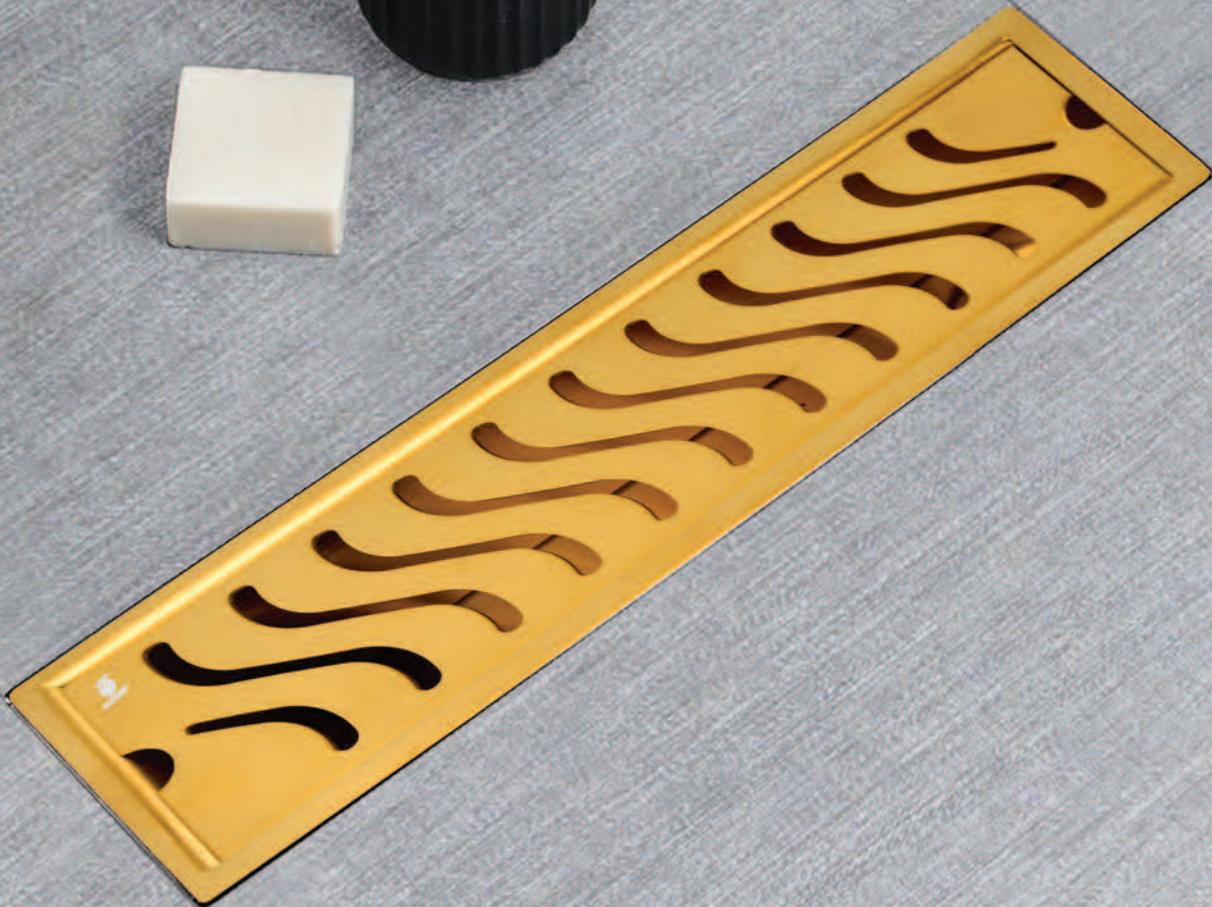
* TERMS & CONDITIONS APPLY



COLOR SHOWER

DRAIN SERIES

This Heavy-Duty shower drain channels, available in different pvd colors such as gold, rose gold, and black finishes, offers unique durability and elegance.



COMPASS SHOWER DRAIN

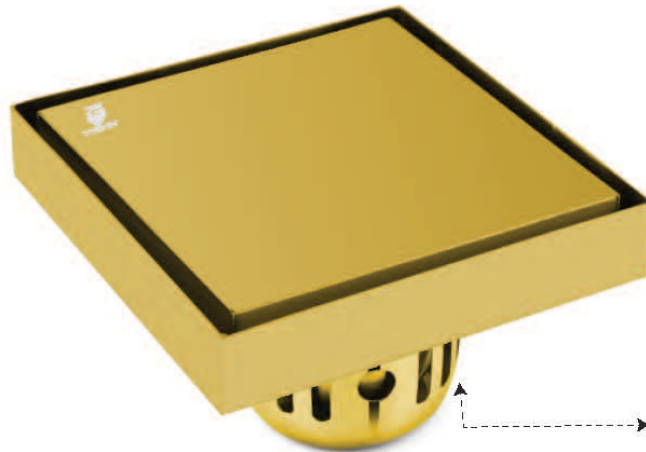


PACKAGING

SQUARE FLOOR DRAIN

MODEL CODE	SIZE (L X W)		FINISH	M.R.P. (₹)
	(MM)	(INCHES)		(INCLUSIVE OF ALL TAXES)
CCSD	152X152	6X6	GLOSS/MATT	16,500/-

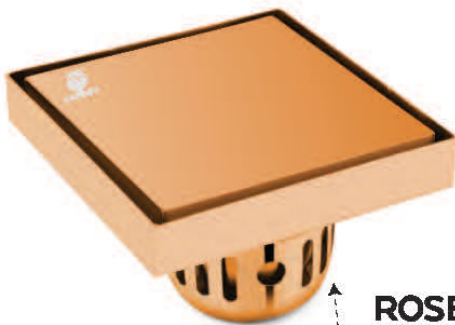
SQUARE GRANITE INSERT DRAIN



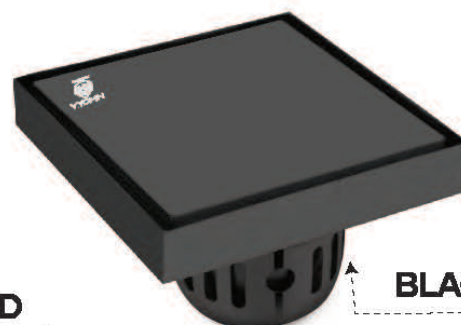
GOLD

SQUARE GRANITE INSERT DRAIN

MODEL CODE	SIZE (L X W)		FINISH	M.R.P. (₹)
	(MM)	(INCHES)		(INCLUSIVE OF ALL TAXES)
CSGD01	127X127	5X5	GLOSS/MATT	6,900/-
CSGD02	152X152	6X6	GLOSS/MATT	7,300/-



ROSE GOLD



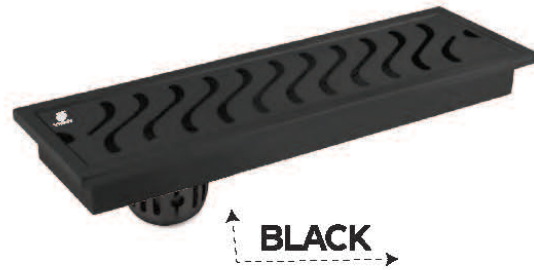
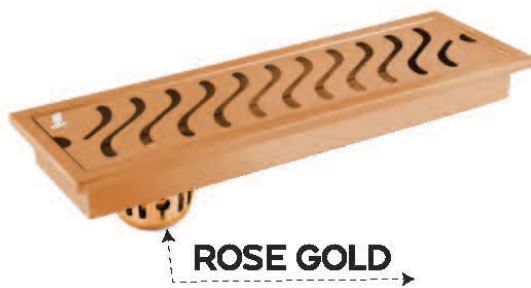
BLACK

INFINITY SHOWER DRAIN



SHOWER DRAIN CHANNEL

MODEL CODE	SIZE (L X W)		FINISH	M.R.P. (₹) <small>(INCLUSIVE OF ALL TAXES)</small>
	(MM)	(INCHES)		
CSDW01	305X102	12X4	GLOSS/MATT	10,500/-
CSDW02	455X102	18X4	GLOSS/MATT	12,500/-
CSDW03	610X102	24X4	GLOSS/MATT	14,200/-
CSDW04	760X102	30X4	GLOSS/MATT	16,500/-
CSDW05	915X102	36X4	GLOSS/MATT	19,000/-
CSDW06	1065X102	42X4	GLOSS/MATT	24,500/-
CSDW07	1220X102	48X4	GLOSS/MATT	28,500/-
CSDW08	1525X102	60X4	GLOSS/MATT	35,500/-



GRANITE INSERT DRAIN



GRANITE INSERT DRAIN CHANNEL

MODEL CODE	SIZE (L X W)		FINISH	M.R.P. (₹) <small>(INCLUSIVE OF ALL TAXES)</small>
	(MM)	(INCHES)		
CLGD01	305X102	12X4	GLOSS/MATT	11,700/-
CLGD02	455X102	18X4	GLOSS/MATT	13,750/-
CLGD03	610X102	24X4	GLOSS/MATT	15,500/-
CLGD04	760X102	30X4	GLOSS/MATT	18,000/-
CLGD05	915X102	36X4	GLOSS/MATT	20,500/-
CLGD06	1065X102	42X4	GLOSS/MATT	25,000/-
CLGD07	1220X102	48X4	GLOSS/MATT	30,000/-
CLGD08	1525X102	60X4	GLOSS/MATT	38,000/-

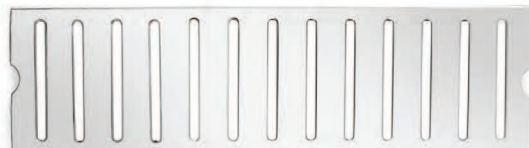


OTHER GRATING DESIGNS
 AVAILABLE *

FLUTE



PIANO



FORCE



PL. NOTE : ABOVE DESIGNS ARE AVAILABLE IN COLOR SHOWER DRAIN SERIES ONLY

HARDIK®



VYOMH

COLORED FLOOR DRAIN SERIES

These Floor Drains, With a Compass - like Design (Omitting Cardinal Directions), Function as a Four - piece Cockroach Trap, Boasting Vibrant Colors & Functionality.



* DESIGN REGISTRATION PENDING

SQ. FLOOR DRAINER (APEX)



ANTI-COCKROACH FLOOR DRAINER

4 Pcs.

MODEL CODE	SIZE (L X W)		FINISH	M.R.P. (₹) <small>(INCLUSIVE OF ALL TAXES)</small>
	(MM)	(INCHES)		
CSA01	127X127	5X5	GLOSS/MATT	4,885/-
CSA02	152X152	6X6	GLOSS/MATT	5,060/-



ANTI-COCKROACH WITH LOCK SYSTEM

2 PCS.

MODEL CODE	SIZE (L X W)		FINISH	M.R.P. (₹) <small>(INCLUSIVE OF ALL TAXES)</small>
	(MM)	(INCHES)		
CSA03	127X127	5X5	GLOSS/MATT	2,335/-
CSA04	152X152	6X6	GLOSS/MATT	2,450/-

SQ. FLOOR DRAINER (RADIAL)



ANTI-COCKROACH FLOOR DRAINER

4 Pcs.

MODEL CODE	SIZE (L X W)		FINISH	M.R.P. (₹) <small>(INCLUSIVE OF ALL TAXES)</small>
	(MM)	(INCHES)		
CSR01	127X127	5X5	GLOSS/MAT	5,880/-
CSR02	152X152	6X6	GLOSS/MAT	6,000/-



ANTI-COCKROACH WITH LOCK SYSTEM

2 PCS.

MODEL CODE	SIZE (L X W)		FINISH	M.R.P. (₹) <small>(INCLUSIVE OF ALL TAXES)</small>
	(MM)	(INCHES)		
CSR03	127X127	5X5	GLOSS/MATT	3,200/-
CSR04	152X152	6X6	GLOSS/MATT	3,500/-

APEX FLOOR DRAIN

RADIAL FLOOR DRAIN



ROSE GOLD



BLACK

AVAILABLE IN 3 COLORS



ROSE GOLD



BLACK

AVAILABLE IN 3 COLORS



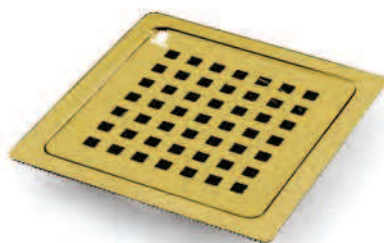
SQ. FLOOR DRAINER (ONYX)



ANTI-COCKROACH FLOOR DRAINER

4 Pcs.

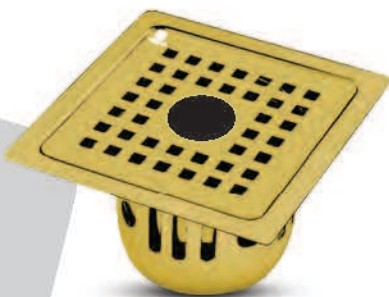
MODEL CODE	SIZE (L X W)		FINISH	M.R.P. (₹) <small>(INCLUSIVE OF ALL TAXES)</small>
	(MM)	(INCHES)		
CCV01	127X127	5X5	GLOSS/MATT	4,885/-
CCV02	152X152	6X6	GLOSS/MATT	5,060/-



ANTI-COCKROACH WITH LOCK SYSTEM

2 PCS.

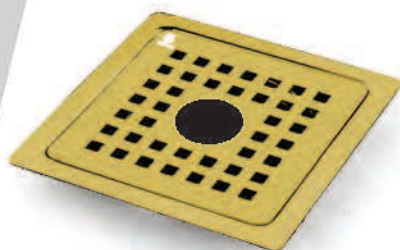
MODEL CODE	SIZE (L X W)		FINISH	M.R.P. (₹) <small>(INCLUSIVE OF ALL TAXES)</small>
	(MM)	(INCHES)		
CCV03	127X127	5X5	GLOSS/MATT	2,335/-
CCV04	152X152	6X6	GLOSS/MATT	2,450/-



FLOOR DRAINER WITH LOCK SYSTEM (WITH 32 MM HOLE)

4 Pcs.

MODEL CODE	SIZE (L X W)		FINISH	M.R.P. (₹) <small>(INCLUSIVE OF ALL TAXES)</small>
	(MM)	(INCHES)		
CCV05H	127X127	5X5	GLOSS/MATT	4,885/-
CCV06H	152X152	6X6	GLOSS/MATT	5,060/-



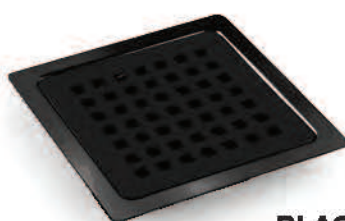
FLOOR DRAINER WITH LOCK SYSTEM (WITH 32 MM HOLE)

2 PCS.

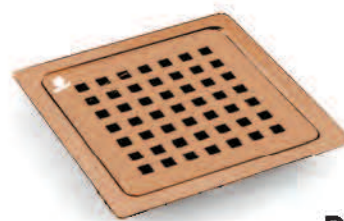
MODEL CODE	SIZE (L X W)		FINISH	M.R.P. (₹) <small>(INCLUSIVE OF ALL TAXES)</small>
	(MM)	(INCHES)		
CCV07H	127X127	5X5	GLOSS/MATT	2,335/-
CCV08H	152X152	6X6	GLOSS/MATT	2,450/-

ONYX FLOOR DRAIN

AVAILABLE IN 3 COLORS



BLACK



ROSE GOLD



SQ. FLOOR DRAINER (ONYX)



ROUND FLOOR DRAIN SERIES

This Round - shaped Floor Drain is Crafted from Premium 18/8 Stainless Steel Materials, Offering Durability & Efficient Water Drainage for Various Settings.



ROUND FLOOR DRAINER (RADIAL)



FLOOR DRAINER
 WITH LOCK SYSTEM

ANTI-COCKROACH FLOOR DRAINER

4 PCS.

MODEL CODE	SIZE (L X W)		FINISH	M.R.P. (₹) <small>(INCLUSIVE OF ALL TAXES)</small>
	(MM)	(INCHES)		
RR01	127 Ø	5 Ø	GLOSS/MATT	1,575/-

*DESIGN REGISTRATION PENDING



FLOOR DRAINER

2 PCS.

MODEL CODE	SIZE (L X W)		FINISH	M.R.P. (₹) <small>(INCLUSIVE OF ALL TAXES)</small>
	(MM)	(INCHES)		
RR02	127 Ø	5 Ø	GLOSS/MATT	1,015/-

*DESIGN REGISTRATION PENDING



ROUND FLOOR DRAINER WITH CAP (APEX)

ANTI-COCKROACH

FLOOR DRAINER WITH CAP (32 MM HOLE)

4 PCS.

MODEL CODE	SIZE (L X W)		FINISH	M.R.P. (₹) <small>(INCLUSIVE OF ALL TAXES)</small>
	(MM)	(INCHES)		
RA01C	127 Ø	5 Ø	GLOSS	1,125/-

INTRODUCING OUR PREMIUM FLOOR DRAIN, METICULOUSLY CRAFTED FROM HIGH-QUALITY 304 GRADE STAINLESS STEEL FOR UNPARALLELED DURABILITY AND LONGEVITY.

THIS FLOOR DRAIN IS EQUIPPED WITH A 32 MM STAINLESS STEEL CAP, PROVIDING A SECURE COVER FOR THE DRAIN HOLE. THE CAP CAN BE EFFORTLESSLY REMOVED TO ACCOMMODATE VARIOUS PLUMBING NEEDS, SUCH AS CONNECTING A WASHING MACHINE PIPE OR FACILITATING WATER DRAINAGE IN KITCHEN SINKS.

ITS VERSATILE DESIGN ENSURES SEAMLESS INTEGRATION INTO ANY HOUSEHOLD OR COMMERCIAL SETTING, OFFERING CONVENIENCE AND FUNCTIONALITY AT EVERY TURN.



FLOOR DRAINER WITH LOCK SYSTEM

FLOOR DRAINER WITH CAP

(32 MM HOLE)

2 PCS.

MODEL CODE	SIZE (L X W)		FINISH	M.R.P. (₹) <small>(INCLUSIVE OF ALL TAXES)</small>
	(MM)	(INCHES)		
RA02C	127 Ø	5 Ø	GLOSS	680/-



ROUND FLOOR DRAINER WITH KNOB (CLASSIC)



ANTI-COCKROACH FLOOR DRAINER WITH KNOB

4 PCS.

MODEL CODE	SIZE (L X W)		FINISH	M.R.P. (₹)
	(MM)	(INCHES)		(INCLUSIVE OF ALL TAXES)
RC01K	127 Ø	5 Ø	GLOSS/MATT	1,125/-

INTRODUCING OUR INNOVATIVE FLOOR DRAIN, CRAFTED WITH PRECISION FROM 304 GRADE STAINLESS STEEL, ENSURING DURABILITY AND RELIABILITY.

THIS FLOOR DRAIN IS DESIGNED WITH ENHANCED FUNCTIONALITY AND EASE OF MAINTENANCE. INSIDE, A CONVENIENT KNOB ENABLES EFFORTLESS LIFTING, FACILITATING SEAMLESS CLEANING OPERATIONS.

BY LIFTING THE KNOB, ANYONE CAN ACCESS THE DRAIN FOR THOROUGH CLEANING WITHOUT HAVING TO TOUCH FOREIGN SUBSTANCES OR RESIDUAL HAIRS. THIS FEATURE NOT ONLY PROMOTES HYGIENE BUT ALSO PREVENTS THE EMERGENCE OF UNWANTED PESTS LIKE COCKROACHES.

OUR FLOOR DRAIN GUARANTEES A CLEAN AND HYGIENIC ENVIRONMENT, PROVIDING UNPARALLELED CONVENIENCE AND PEACE OF MIND.



LIFTING KNOB

ROUND FLOOR DRAINER WITH KNOB (APEX)



ANTI-COCKROACH FLOOR DRAINER WITH KNOB

4 PCS.

MODEL CODE	SIZE (L X W)		FINISH	M.R.P. (₹)
	(MM)	(INCHES)		(INCLUSIVE OF ALL TAXES)
RA01K	127 Ø	5 Ø	GLOSS/MATT	1,125/-



LIFTING KNOB

ROUND FLOOR DRAINER (APEX)

ANTI-COCKROACH FLOOR DRAINER

4 PCS.

MODEL CODE	SIZE (L X W) (MM)	GRADE	FINISH	M.R.P. (₹) <small>(INCLUSIVE OF ALL TAXES)</small>
RA01	127 Ø	AISI 304	GLOSS/MATT	925/-
RA02	127 Ø	AISI 202	GLOSS/MATT	400/-



ANTI-COCKROACH FLOOR DRAINER

2 PCS.

MODEL CODE	SIZE (L X W) (MM)	GRADE	FINISH	M.R.P. (₹) <small>(INCLUSIVE OF ALL TAXES)</small>
RA03	127 Ø	AISI 304	GLOSS/MATT	480/-
RA04	127 Ø	AISI 202	GLOSS/MATT	190/-



ANTI-COCKROACH FLOOR-DRAINER (WITH 32 MM HOLE)

4 PCS.

MODEL CODE	SIZE (L X W) (MM)	GRADE	FINISH	M.R.P. (₹) <small>(INCLUSIVE OF ALL TAXES)</small>
RA05H	127 Ø	AISI 304	GLOSS/MATT	925/-
RA06H	127 Ø	AISI 202	GLOSS/MATT	400/-



ANTI-COCKROACH FLOOR DRAINER

2 PCS.

MODEL CODE	SIZE (L X W) (MM)	GRADE	FINISH	M.R.P. (₹) <small>(INCLUSIVE OF ALL TAXES)</small>
RA07H	127 Ø	AISI 304	GLOSS/MATT	480/-
RA08H	127 Ø	AISI 202	GLOSS/MATT	190/-



ROUND FLOOR DRAINER (CLASSIC)



ANTI-COCKROACH FLOOR DRAINER

4 PCS.

MODEL CODE	SIZE (L X W)	GRADE	FINISH	M.R.P. (₹)
	(MM)			(INCLUSIVE OF ALL TAXES)
RC01	127 Ø	AISI 304	GLOSS/MATT	925/-
RC02	127 Ø	AISI 202	GLOSS/MATT	400/-

*DESIGN REGISTRATION PENDING



ANTI-COCKROACH WITH LOCK SYSTEM

2 PCS.

MODEL CODE	SIZE (L X W)	GRADE	FINISH	M.R.P. (₹)
	(MM)			(INCLUSIVE OF ALL TAXES)
RC03	127 Ø	AISI 304	GLOSS/MATT	480/-
RC04	127 Ø	AISI 202	GLOSS/MATT	190/-



ANTI-COCKROACH FLOOR DRAINER (WITH 32 MM HOLE)

4 PCS.

MODEL CODE	SIZE (L X W)	GRADE	FINISH	M.R.P. (₹)
	(MM)			(INCLUSIVE OF ALL TAXES)
RC05H	127 Ø	AISI 304	GLOSS/MATT	925/-
RC06H	127 Ø	AISI 202	GLOSS/MATT	400/-



FLOOR DRAINER WITH LOCK SYSTEM (WITH 32 MM HOLE)

2 PCS.

MODEL CODE	SIZE (L X W)	GRADE	FINISH	M.R.P. (₹)
	(MM)			(INCLUSIVE OF ALL TAXES)
RC07H	127 Ø	AISI 304	GLOSS/MATT	480/-
RC08H	127 Ø	AISI 202	GLOSS/MATT	190/-

HARDIK®



VYOMH

SQUARE FLOOR DRAIN SERIES

This Square - shaped Floor Drain is Crafted from Premium 18/8 Stainless Steel Materials, Offering Durability & Efficient Water Drainage for Various Settings.



SQUARE FLAT FLOOR DRAINER (RADIAL)



ANTI-COCKROACH FLOOR DRAINER

4 PCS.

MODEL CODE	SIZE (L X W)		FINISH	M.R.P. (₹) <small>[INCLUSIVE OF ALL TAXES]</small>
	(MM)	(INCHES)		
SR01	127X127	5X5	GLOSS	1,575/-
SR02	152X152	6X6	GLOSS	2,025/-

*DESIGN REGISTRATION PENDING



FLOOR DRAINER WITH LOCK SYSTEM

2 PCS.

MODEL CODE	SIZE (L X W)		FINISH	M.R.P. (₹) <small>[INCLUSIVE OF ALL TAXES]</small>
	(MM)	(INCHES)		
SR03	127X127	5X5	GLOSS	1,015/-
SR04	152X152	6X6	GLOSS	1,575/-

*DESIGN REGISTRATION PENDING



SQUARE FLAT FLOOR DRAINER WITH CAP (APEX)

ANTI-COCKROACH FLOOR DRAINER

4 PCS.

MODEL CODE	SIZE (L X W)		FINISH	M.R.P. (₹)
	(MM)	(INCHES)		(INCLUSIVE OF ALL TAXES)
SA01C	127X127	5X5	GLOSS	1185/-
SA02C	152X152	6X6	GLOSS	1360/-

INTRODUCING OUR PREMIUM FLOOR DRAIN, METICULOUSLY CRAFTED FROM HIGH-QUALITY 304 GRADE STAINLESS STEEL FOR UNPARALLELED DURABILITY AND LONGEVITY.

THIS FLOOR DRAIN IS EQUIPPED WITH A 32 MM STAINLESS STEEL CAP, PROVIDING A SECURE COVER FOR THE DRAIN HOLE. THE CAP CAN BE EFFORTLESSLY REMOVED TO ACCOMMODATE VARIOUS PLUMBING NEEDS, SUCH AS CONNECTING A WASHING MACHINE PIPE OR FACILITATING WATER DRAINAGE IN KITCHEN SINKS.

ITS VERSATILE DESIGN ENSURES SEAMLESS INTEGRATION INTO ANY HOUSEHOLD OR COMMERCIAL SETTING, OFFERING CONVENIENCE AND FUNCTIONALITY AT EVERY TURN.



FLOOR DRAINER WITH LOCK SYSTEM

FLOOR DRAINER WITH CAP (32 MM HOLE)

4 PCS.

MODEL CODE	SIZE (L X W)		FINISH	M.R.P. (₹)
	(MM)	(INCHES)		(INCLUSIVE OF ALL TAXES)
SA03C	127X127	5X5	GLOSS	700/-
SA04C	152X152	6X6	GLOSS	825/-



SQUARE FLAT FLOOR DRAINER WITH KNOB (CLASSIC)



ANTI-COCKROACH FLOOR DRAINER

4 PCS.

MODEL CODE	SIZE (L X W)		FINISH	M.R.P. (₹) <small>(INCLUSIVE OF ALL TAXES)</small>
	(MM)	(INCHES)		
SC01K	127X127	5X5	GLOSS/MATT	1,185/-
SC02K	152X152	6X6	GLOSS/MATT	1,360/-



LIFTING KNOB

INTRODUCING OUR INNOVATIVE FLOOR DRAIN, CRAFTED WITH PRECISION FROM 304 GRADE STAINLESS STEEL, ENSURING DURABILITY AND RELIABILITY.

THIS FLOOR DRAIN IS DESIGNED WITH ENHANCED FUNCTIONALITY AND EASE OF MAINTENANCE. INSIDE, A CONVENIENT KNOB ENABLES EFFORTLESS LIFTING, FACILITATING SEAMLESS CLEANING OPERATIONS.

BY LIFTING THE KNOB, ANYONE CAN ACCESS THE DRAIN FOR THOROUGH CLEANING WITHOUT HAVING TO TOUCH FOREIGN SUBSTANCES OR RESIDUAL HAIRS. THIS FEATURE NOT ONLY PROMOTES HYGIENE BUT ALSO PREVENTS THE EMERGENCE OF UNWANTED PESTS LIKE COCKROACHES.

OUR FLOOR DRAIN GUARANTEES A CLEAN AND HYGIENIC ENVIRONMENT, PROVIDING UNPARALLELED CONVENIENCE AND PEACE OF MIND.

SQUARE FLAT FLOOR DRAINER WITH KNOB (APEX)



ANTI-COCKROACH FLOOR DRAINER

4 PCS.

MODEL CODE	SIZE (L X W)		FINISH	M.R.P. (₹) <small>(INCLUSIVE OF ALL TAXES)</small>
	(MM)	(INCHES)		
SA01K	127X127	5X5	GLOSS/MATT	1,185/-
SA02K	152X152	6X6	GLOSS/MATT	1,360/-



LIFTING KNOB

SQUARE FLAT FLOOR DRAINER (APEX)

ANTI-COCKROACH FLOOR DRAINER

4 PCS.

MODEL CODE	SIZE (L X W)	GRADE	FINISH	M.R.P. (₹)
	(MM)			(INCLUSIVE OF ALL TAXES)
SA01	127X127	AISI 304	GLOSS/MATT	985/-
SA02	152X152	AISI 304	GLOSS/MATT	1,160/-
SA03	127X127	AISI 202	GLOSS/MATT	450/-



FLOOR DRAINER

2 PCS.

MODEL CODE	SIZE (L X W)	GRADE	FINISH	M.R.P. (₹)
	(MM)			(INCLUSIVE OF ALL TAXES)
SA04	127X127	AISI 304	GLOSS/MATT	500/-
SA05	152X152	AISI 304	GLOSS/MATT	625/-
SA06	127X127	AISI 202	GLOSS/MATT	235/-



ANTI-COCKROACH FLOOR DRAINER

4 PCS.

MODEL CODE	SIZE (L X W)	GRADE	FINISH	M.R.P. (₹)
	(MM)			(INCLUSIVE OF ALL TAXES)
SA07H	127X127	AISI 304	GLOSS/MATT	985/-
SA08H	152X152	AISI 304	GLOSS/MATT	1,160/-
SA09H	127X127	AISI 202	GLOSS/MATT	450/-



FLOOR DRAINER WITH LOCK SYSTEM (32 MM HOLE)

2 PCS.

MODEL CODE	SIZE (L X W)	GRADE	FINISH	M.R.P. (₹)
	(MM)			(INCLUSIVE OF ALL TAXES)
SA10H	127X127	AISI 304	GLOSS/MATT	500/-
SA11H	152X152	AISI 304	GLOSS/MATT	625/-
SA12H	127X127	AISI 202	GLOSS/MATT	235/-



SQUARE FLAT FLOOR DRAINER (CLASSIC)



FLOOR DRAINER WITH LOCK SYSTEM (WITH 32 MM HOLE)

4 PCS.

MODEL CODE	SIZE (L X W) (MM)	GRADE	FINISH	M.R.P. (₹) <small>(INCLUSIVE OF ALL TAXES)</small>
SC01	127X127	AISI 304	GLOSS/MATT	985/-
SC02	152X152	AISI 304	GLOSS/MATT	1,160/-
SC03	127X127	AISI 202	GLOSS/MATT	450/-



FLOOR DRAINER

2 PCS.

MODEL CODE	SIZE (L X W) (MM)	GRADE	FINISH	M.R.P. (₹) <small>(INCLUSIVE OF ALL TAXES)</small>
SC04	127X127	AISI 304	GLOSS/MATT	500/-
SC05	152X152	AISI 304	GLOSS/MATT	625/-
SC06	127X127	AISI 202	GLOSS/MATT	235/-



ANTI COCKROACH FLOOR DRAINER (WITH 32 MM HOLE)

4 PCS.

MODEL CODE	SIZE (L X W) (MM)	GRADE	FINISH	M.R.P. (₹) <small>(INCLUSIVE OF ALL TAXES)</small>
SC07	127X127	AISI 304	GLOSS/MATT	985/-
SC08	152X152	AISI 304	GLOSS/MATT	1,160/-
SC09	127X127	AISI 202	GLOSS/MATT	450/-



FLOOR DRAINER WITH LOCK SYSTEM (WITH 32 MM HOLE)

2 PCS.

MODEL CODE	SIZE (L X W) (MM)	GRADE	FINISH	M.R.P. (₹) <small>(INCLUSIVE OF ALL TAXES)</small>
SC10	127X127	AISI 304	GLOSS/MATT	500/-
SC11	152X152	AISI 304	GLOSS/MATT	625/-
SC12	127X127	AISI 202	GLOSS/MATT	235/-

MATRIX FLOOR DRAINER

This Square - Shaped Floor Drain is Crafted from Premium 18/8 Stainless Steel Materials, Offering Durability & Efficient Water Drainage with latest designs for various settings.



COMPASS FLOOR DRAINER



ANTI-COCKROACH FLOOR DRAINER

4 PCS.

MODEL CODE	SIZE (L X W)		FINISH	M.R.P. (₹)
	(MM)	(INCHES)		(INCLUSIVE OF ALL TAXES)
CR01	127X127	5X5	GLOSS/MATT	2,150/-
CR02	152X152	6X6	GLOSS/MATT	2,435/-

FLOOR DRAINER

2 PCS.

MODEL CODE	SIZE (L X W)		FINISH	M.R.P. (₹)
	(MM)	(INCHES)		(INCLUSIVE OF ALL TAXES)
CR03	127X127	5X5	GLOSS/MATT	1,515/-
CR04	152X152	6X6	GLOSS/MATT	1,800/-

SQUARE FLAT FLOOR DRAINER (ONYX)



ANTI-COCKROACH FLOOR DRAINER

4 PCS.

MODEL CODE	SIZE (L X W)		FINISH	M.R.P. (₹) <small>(INCLUSIVE OF ALL TAXES)</small>
	(MM)	(INCHES)		
CV01	127X127	5X5	GLOSS/MATT	985/-
CV02	152X152	6X6	GLOSS/MATT	1,160/-



FLOOR DRAINER

2 PCS.

MODEL CODE	SIZE (L X W)		FINISH	M.R.P. (₹) <small>(INCLUSIVE OF ALL TAXES)</small>
	(MM)	(INCHES)		
CV03	127X127	5X5	GLOSS/MATT	500/-
CV04	152X152	6X6	GLOSS/MATT	685/-

SQUARE FLAT FLOOR DRAINER (ONYX)



ANTI-COCKROACH FLOOR DRAINER (WITH 32 MM HOLE)

4 PCS.

MODEL CODE	SIZE (L X W)		FINISH	M.R.P. (₹) <small>(INCLUSIVE OF ALL TAXES)</small>
	(MM)	(INCHES)		
CV05H	127X127	5X5	GLOSS/MATT	985/-
CV06H	152X152	6X6	GLOSS/MATT	1,160/-



FLOOR DRAINER WITH 32 MM HOLE

2 PCS.

MODEL CODE	SIZE (L X W)		FINISH	M.R.P. (₹) <small>(INCLUSIVE OF ALL TAXES)</small>
	(MM)	(INCHES)		
CV07H	127X127	5X5	GLOSS/MATT	500/-
CV08H	152X152	6X6	GLOSS/MATT	685/-

HARDIK®



VYOMH

BATHROOM ACCESSORIES

These Floor Drain gratings offer varied Designs & Exceptional Quality, Providing Both Functionality & Aesthetic appeal for Different Settings.



GRATINGS (1 PC.)



ROUND GRATING

FOR FLOOR DRAINER

MODEL CODE	SIZE (L X W)		FINISH	M.R.P. (₹) <small>(INCLUSIVE OF ALL TAXES)</small>
	(MM)	(INCHES)		
GV01	82 Ø	3 Ø	GLOSS	175/-
GV02	98 Ø	4 Ø	GLOSS	220/-
GV03	125 Ø	5 Ø	GLOSS	275/-



ROUND GRATING

FOR FLOOR DRAINER WITH 32 MM HOLE

MODEL CODE	SIZE (L X W)		FINISH	M.R.P. (₹) <small>(INCLUSIVE OF ALL TAXES)</small>
	(MM)	(INCHES)		
GV04	82 Ø	3 Ø	GLOSS	175/-
GV05	98 Ø	4 Ø	GLOSS	220/-
GV06	125 Ø	5 Ø	GLOSS	275/-



SQUARE GRATING (BEND)

FOR FLOOR DRAINER

MODEL CODE	SIZE (L X W)		FINISH	M.R.P. (₹) <small>(INCLUSIVE OF ALL TAXES)</small>
	(MM)	(INCHES)		
GV01B	127X127	5X5	GLOSS	375/-
GV02B	152X152	6X6	GLOSS	425/-



SQUARE GRATING (FLAT)

FOR FLOOR DRAINER

MODEL CODE	SIZE (L X W)		FINISH	M.R.P. (₹) <small>(INCLUSIVE OF ALL TAXES)</small>
	(MM)	(INCHES)		
GV01F	127X127	5X5	GLOSS	375/-
GV02F	152X152	6X6	GLOSS	425/-



SQUARE GRATING (BEND)

FOR FLOOR DRAINER (32 MM HOLE)

MODEL CODE	SIZE (L X W)		FINISH	M.R.P. (₹)
	(MM)	(INCHES)		
GV01BH	127X127	5X5	GLOSS	375/-
GV02BH	152X152	6X6	GLOSS	425/-



SQUARE GRATING (FLAT)

FOR FLOOR DRAINER (32 MM HOLE)

MODEL CODE	SIZE (L X W)		FINISH	M.R.P. (₹)
	(MM)	(INCHES)		
GV01FH	127X127	5X5	GLOSS	375/-
GV02FH	152X152	6X6	GLOSS	425/-

SQUARE FLAT VERTICAL GRATING (THICKNESS 2 MM)

VERTICAL GRATING

FOR FLOOR DRAINER

MODEL CODE	SIZE (L X W)		FINISH	M.R.P. (₹)
	(MM)	(INCHES)		
GJ01	102X102	4X4	GLOSS/MATT	300/-
GJ02	127X127	5X5	GLOSS/MATT	500/-
GJ03	152X152	6X6	GLOSS/MATT	700/-
GJ04	205X205	8X8	GLOSS/MATT	1050/-
GJ05	127 Ø	5 Ø	GLOSS/MATT	500/-



ROUND FLANGE

MODEL CODE	FINISH	GRADE	M.R.P. (₹)
RF01	GLOSS/MATT	AISI 304	72/-



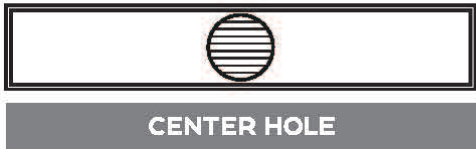


SQUARE FLAT VERTICAL GRATING

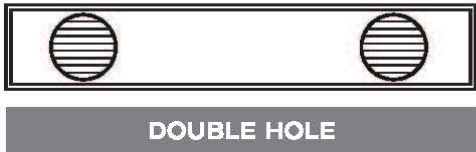
CUSTOMISATION OPTIONS



All the linear drains are manufactured with side outlet hole as shown in the image above.



Positioning of outlet holes and number of outlet holes can be customised as per customer's requirement.



Linear Shower Drains can customised to any Length & any Width as per the customer's requirement and architect recommendations.



BELOW RAMP DRAIN (TITAN SERIES) has been customised to 36 feet (12 feet x 3 pieces) and succesfully delivered as per the customer's requirement



COMMERCIAL FLOOR DRAIN

Introducing the epitome of strength and durability in commercial drainage solutions: Vyomh Stainless steel commercial drains. Engineered to withstand the toughest conditions, these drains are built to last, providing reliable performance even in the busiest of commercial kitchens.

Crafted from premium-grade stainless steel, our commercial drains offer unparalleled resilience against corrosion, rust, and wear, ensuring longevity and durability that outlasts conventional drainage systems. Whether it's the relentless flow of water or the heavy foot traffic of a bustling kitchen environment, our drains stand firm, delivering uncompromising performance day in and day out.

With the flexibility to customize length according to your specific requirements, our Vyomh stainless steel drains seamlessly integrate into any commercial kitchen layout, providing a sleek and functional solution to manage wastewater efficiently. From compact spaces to expansive kitchens, our drains can be tailored to fit your needs, offering versatility without compromise.



As one of the few companies specializing in the manufacture of these robust drainage systems, we take pride in delivering products that exceed industry standards. Our commitment to quality craftsmanship ensures that every drain is meticulously engineered for superior strength, reliability, and longevity. Our stainless steel commercial drains are also eco-friendly, reflecting our commitment to sustainability and environmental responsibility.



E-mail : care@vyomh.com | Web : www.vyomh.com

